



The Nevada Conservation Credit System (CCS)

State-Managed Lands and Greater Sage Grouse Habitat

Sagebrush Ecosystem Technical Team (SETT)

Kelly McGowan, Program Manager

Katie Andrie, NDOW

Dan Huser, NDF

Ethan Mower, NDA

Kathleen Petter, NDSL



State-Owned Lands in GRSG Habitat

State-Owned Lands in GRSG Habitat Management Categories	Approx. Acres
PHMA	12,631
GHMA	20,399
OHMA	12,911
TOTAL	45,941



State-Managed Lands in GRSG Habitat

State-Owned Lands with Greater than 1,000 acres in GRSG Habitat Management Categories	Approx. Acres in GRSG Habitat
Bruneau River Wildlife Management Area	3,501
Cathedral Gorge State Park	1,677
Cave Lake State Park	1,965
Ely State Prison	1,019
Franklin Lake Wildlife Management Area	1,062
HD Summit Parcels	1,017
Izzenhood Ranch Wildlife Management Area	3,832
Kirch Wildlife Management Area	6,779
Snowstorm Wildlife Management Area	7,214
South Fork State Park	1,840
Steptoe Wildlife Management Area	12,211

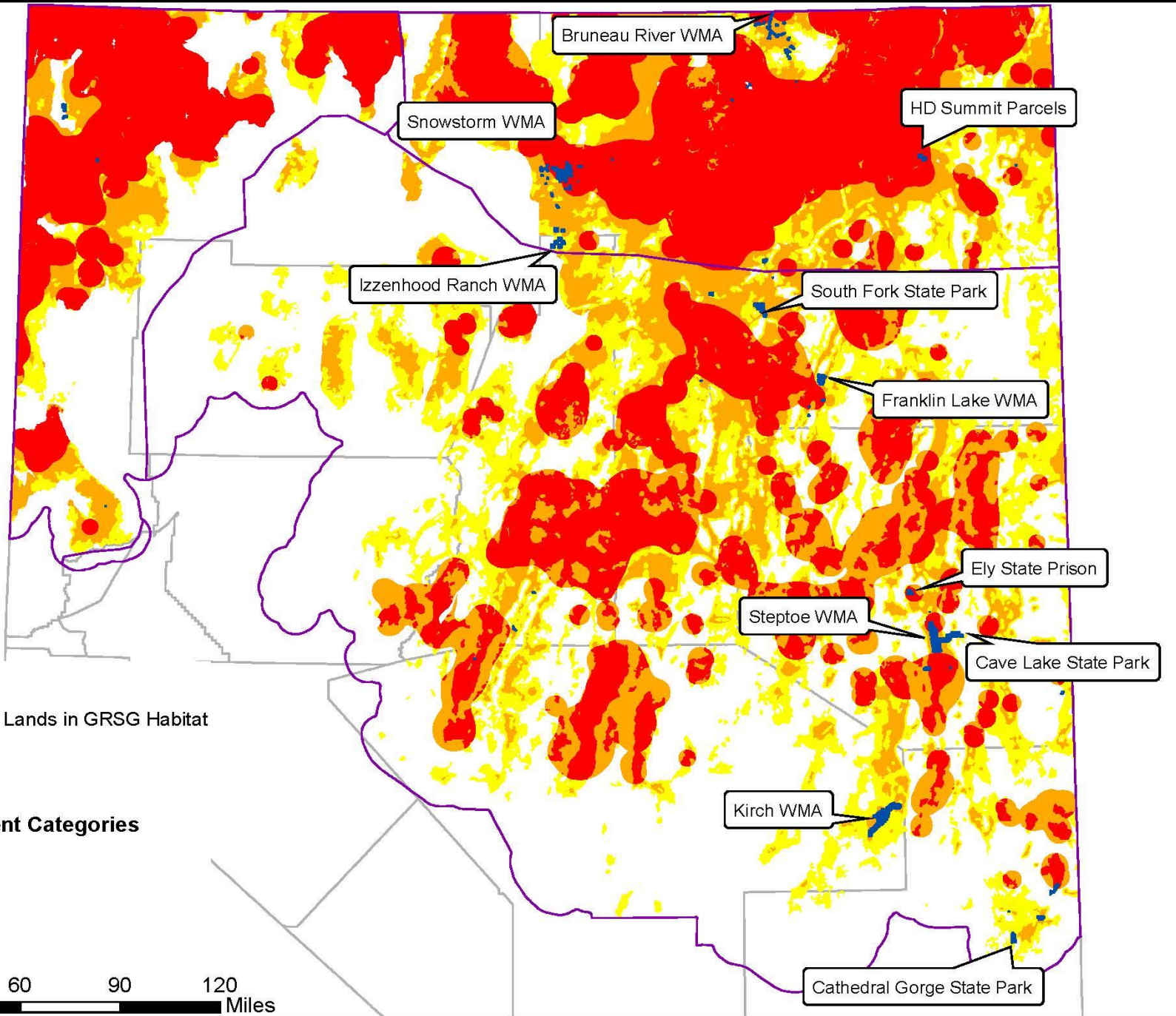


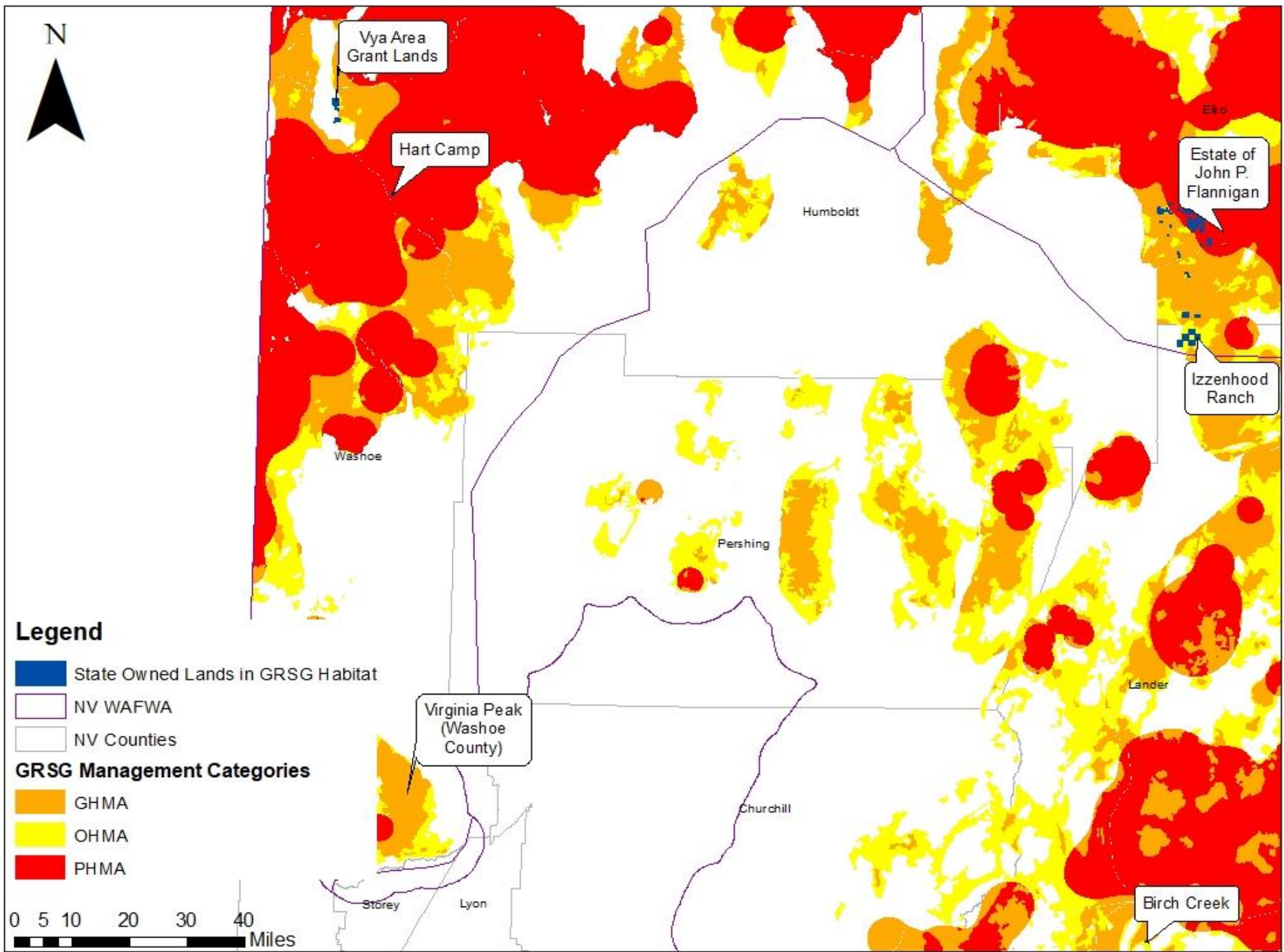
Regulation Impact on State-Managed Lands

- We anticipate the State to be required to mitigate for anthropogenic disturbances as defined in the State Plan.
- Campgrounds, minor buildings, sewer lines, trails, signs, and parking lots are not currently considered disturbances within the CCS and will not require mitigation.

TYPE	SUBTYPE
Towers	Communications
	Meteorological
Powerlines*	Nest Facilitating
	Non-Nest Facilitating
Mines	Active – Large
	Active – Med or Small
	Inactive – Large
	Inactive – Med or Small
	Ancillary – Large
	Ancillary – Med or Small
Oil & Gas Wells	Producing
	Inactive
Urban, Suburban, Ex-Urban Development	Med – High
	Low
Roads	Interstate
	High Use – Paved or Improved; Commercial
	Low Use – Improved; Local
Renewable	Geothermal
	Ancillary – Geothermal
	Solar
	Wind

N





N

Vya Area Grant Lands

Hart Camp

Estate of John P. Flannigan

Izzenhood Ranch

Washoe

Humboldt

Pershing

Lander

Virginia Peak (Washoe County)

Churchill

Storey

Lyon

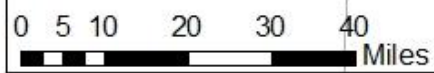
Birch Creek

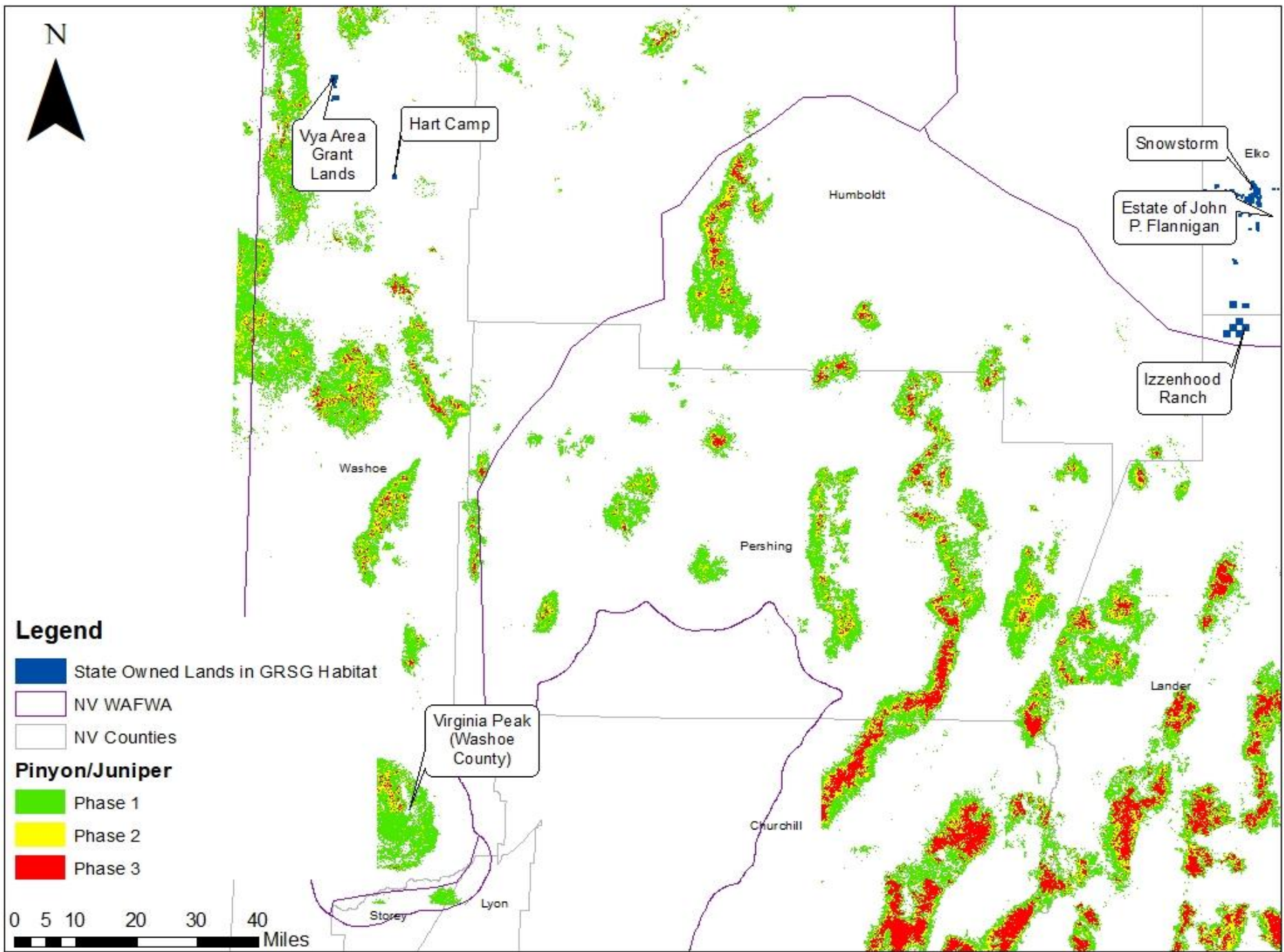
Legend

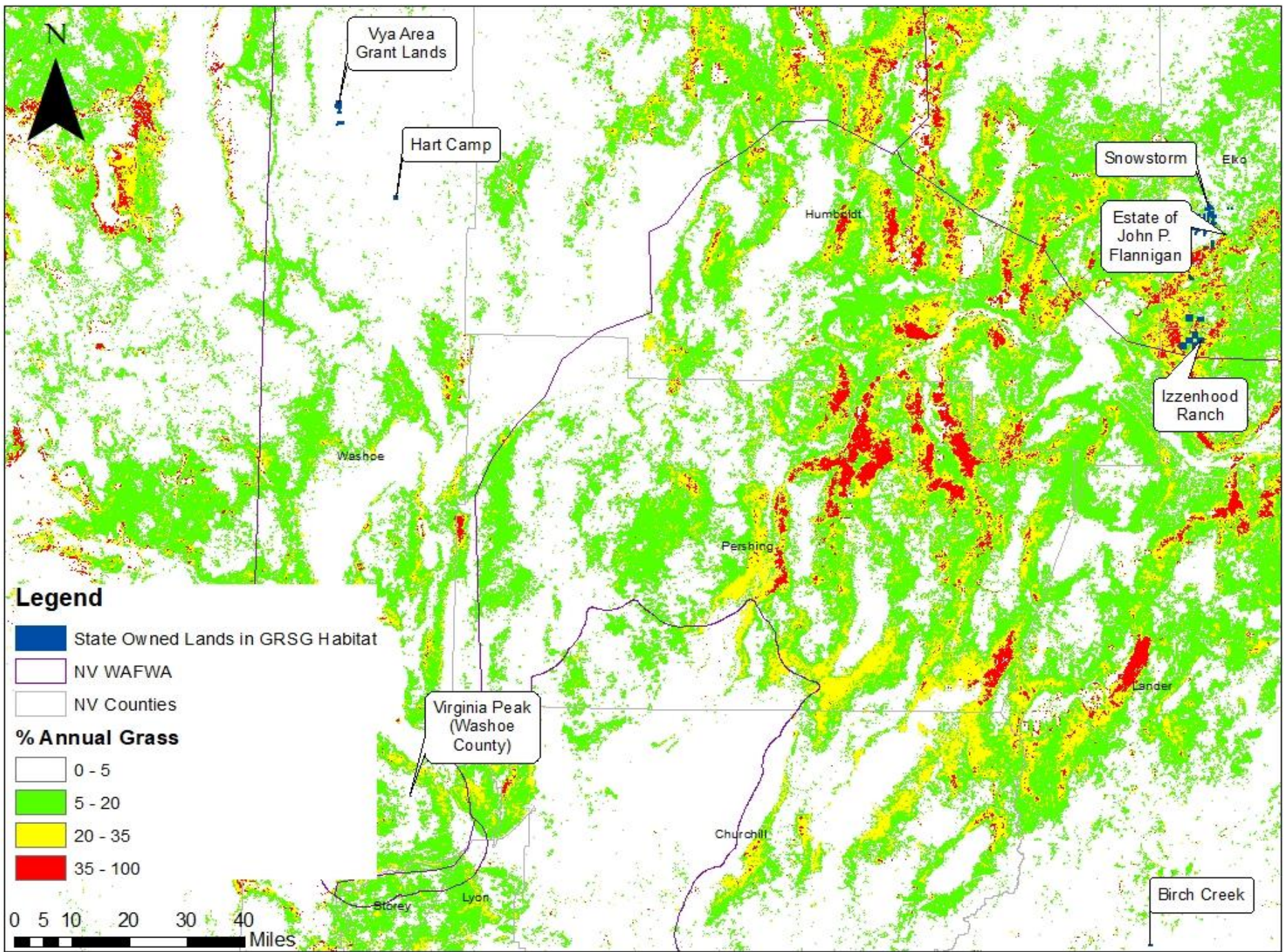
- State Owned Lands in GRSG Habitat
- NV WAFWA
- NV Counties

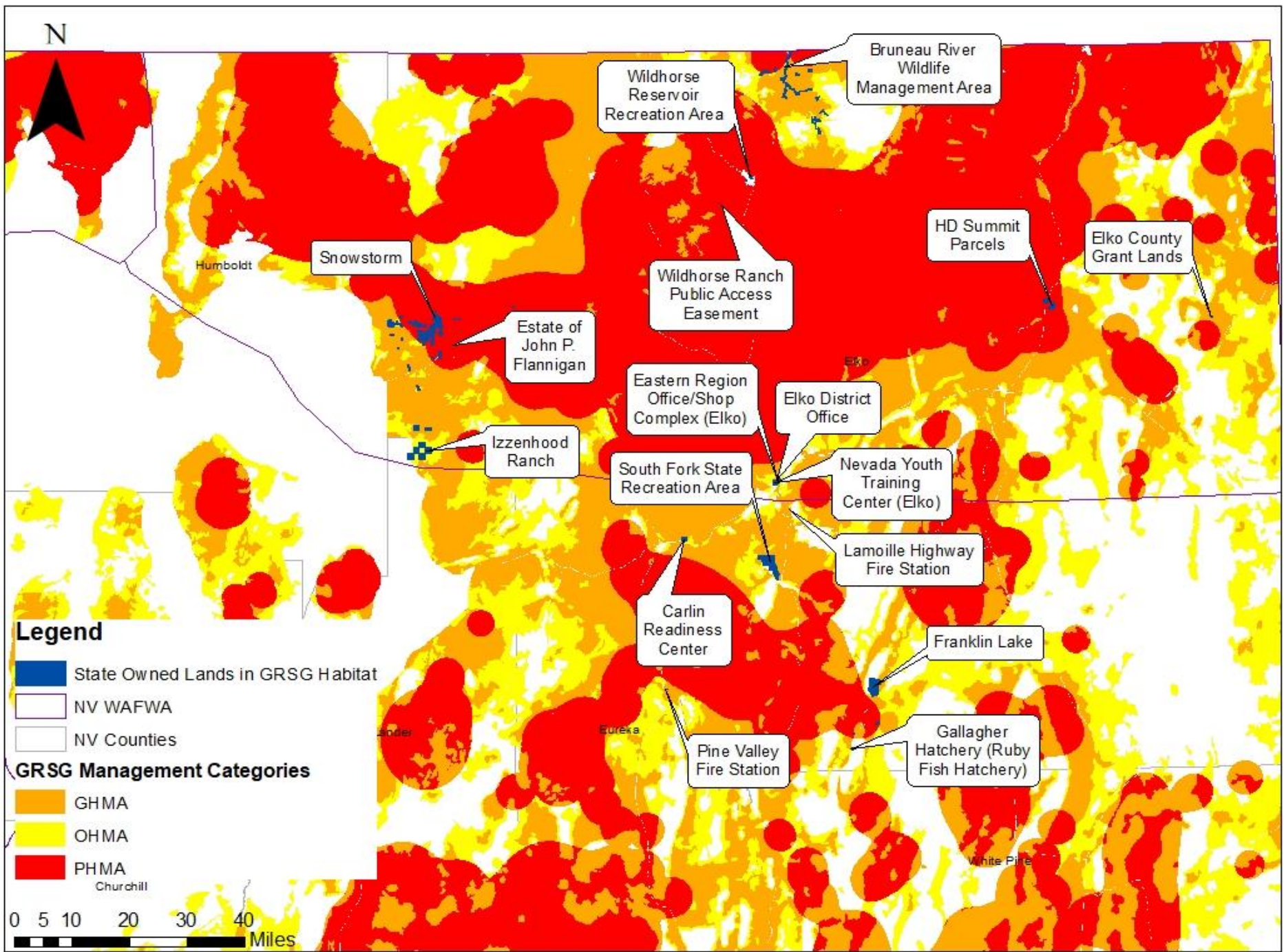
GRSG Management Categories

- GHMA
- OHMA
- PHMA









N

Legend

- State Owned Lands in GRSG Habitat
- NV WAFWA
- NV Counties
- GRSG Management Categories**
- GHMA
- OHMA
- PHMA



Humboldt

Snowstorm

Estate of John P. Flannigan

Izzenhood Ranch

Wildhorse Reservoir Recreation Area

Wildhorse Ranch Public Access Easement

Eastern Region Office/Shop Complex (Elko)

South Fork State Recreation Area

Carlin Readiness Center

Pine Valley Fire Station

Bruneau River Wildlife Management Area

HD Summit Parcels

Elko County Grant Lands

Elko District Office

Nevada Youth Training Center (Elko)

Lamoille Highway Fire Station

Franklin Lake

Gallagher Hatchery (Ruby Fish Hatchery)

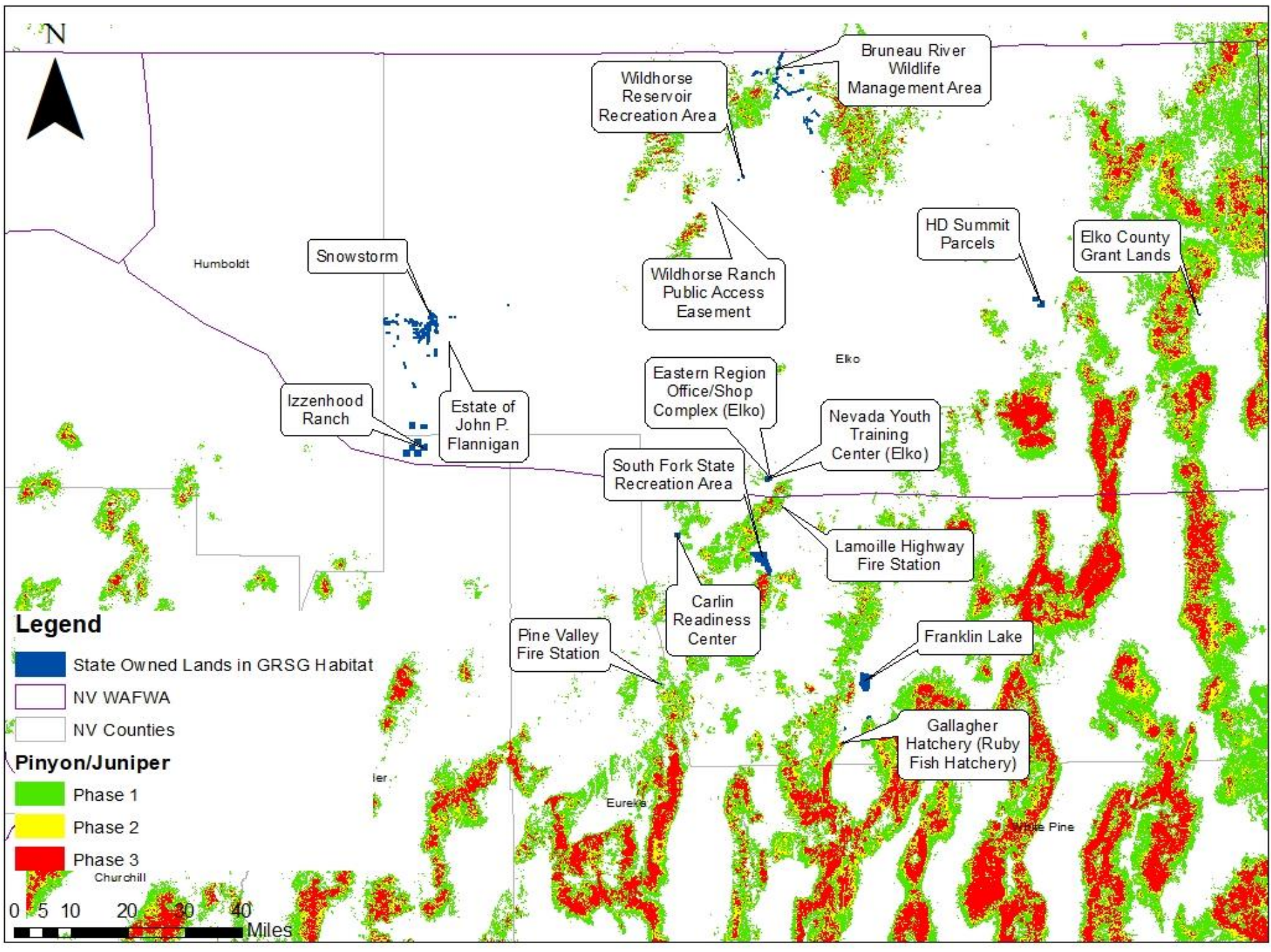
White Pine

Elko

Lander

Eureka

Churchill



N

Humboldt

Snowstorm

Wildhorse Reservoir Recreation Area

Bruneau River Wildlife Management Area

HD Summit Parcels

Elko County Grant Lands

Wildhorse Ranch Public Access Easement

Elko

Izzenhood Ranch

Estate of John P. Flannigan

Eastern Region Office/Shop Complex (Elko)

Nevada Youth Training Center (Elko)

South Fork State Recreation Area

Lamoille Highway Fire Station

Pine Valley Fire Station

Carlin Readiness Center

Franklin Lake

Gallagher Hatchery (Ruby Fish Hatchery)

Eureka

White Pine

Legend

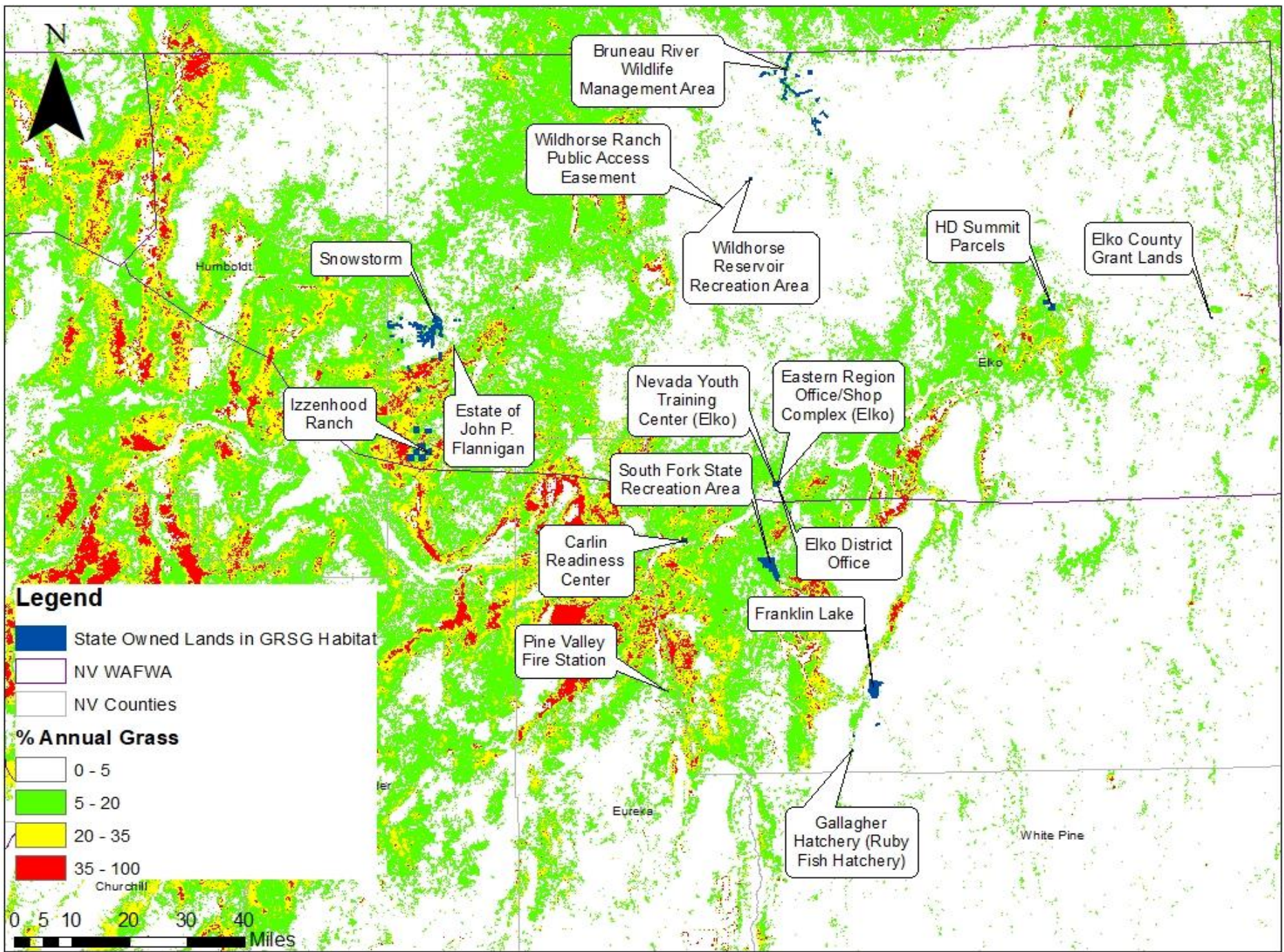
- State Owned Lands in GRSG Habitat
- NV WAFWA
- NV Counties

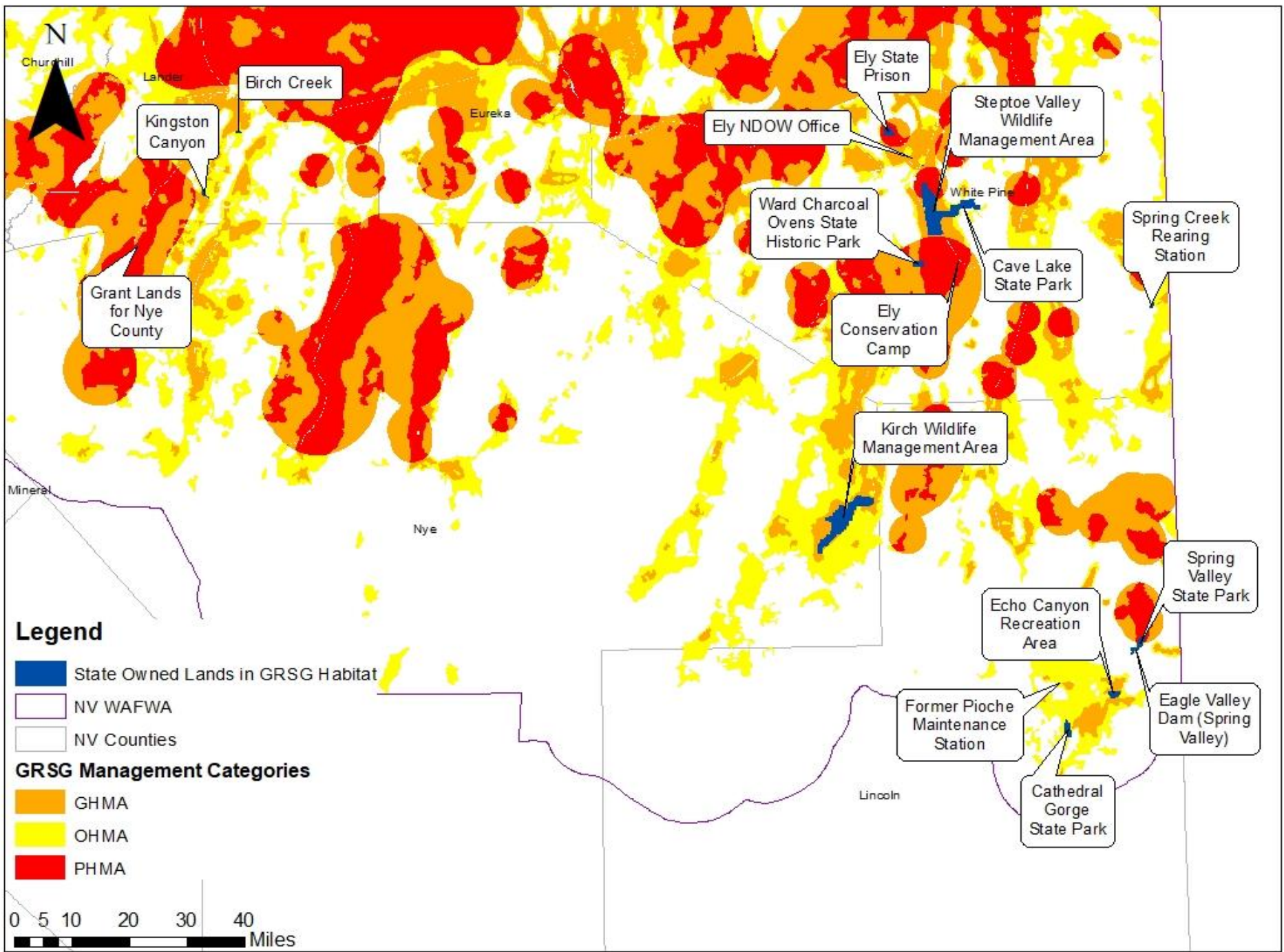
Pinyon/Juniper

- Phase 1
- Phase 2
- Phase 3

Churchill

0 5 10 20 30 40 Miles





N

Churchill

Lander

Birch Creek

Eureka

Ely State Prison

Ely NDOW Office

Steptoe Valley Wildlife Management Area

Kingston Canyon

Ward Charcoal Ovens State Historic Park

White Pine

Spring Creek Rearing Station

Cave Lake State Park

Grant Lands for Nye County

Ely Conservation Camp

Kirch Wildlife Management Area

Mineral

Nye

Spring Valley State Park

Echo Canyon Recreation Area

Eagle Valley Dam (Spring Valley)

Former Pioche Maintenance Station

Cathedral Gorge State Park

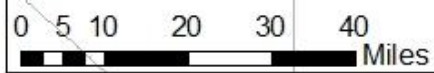
Lincoln

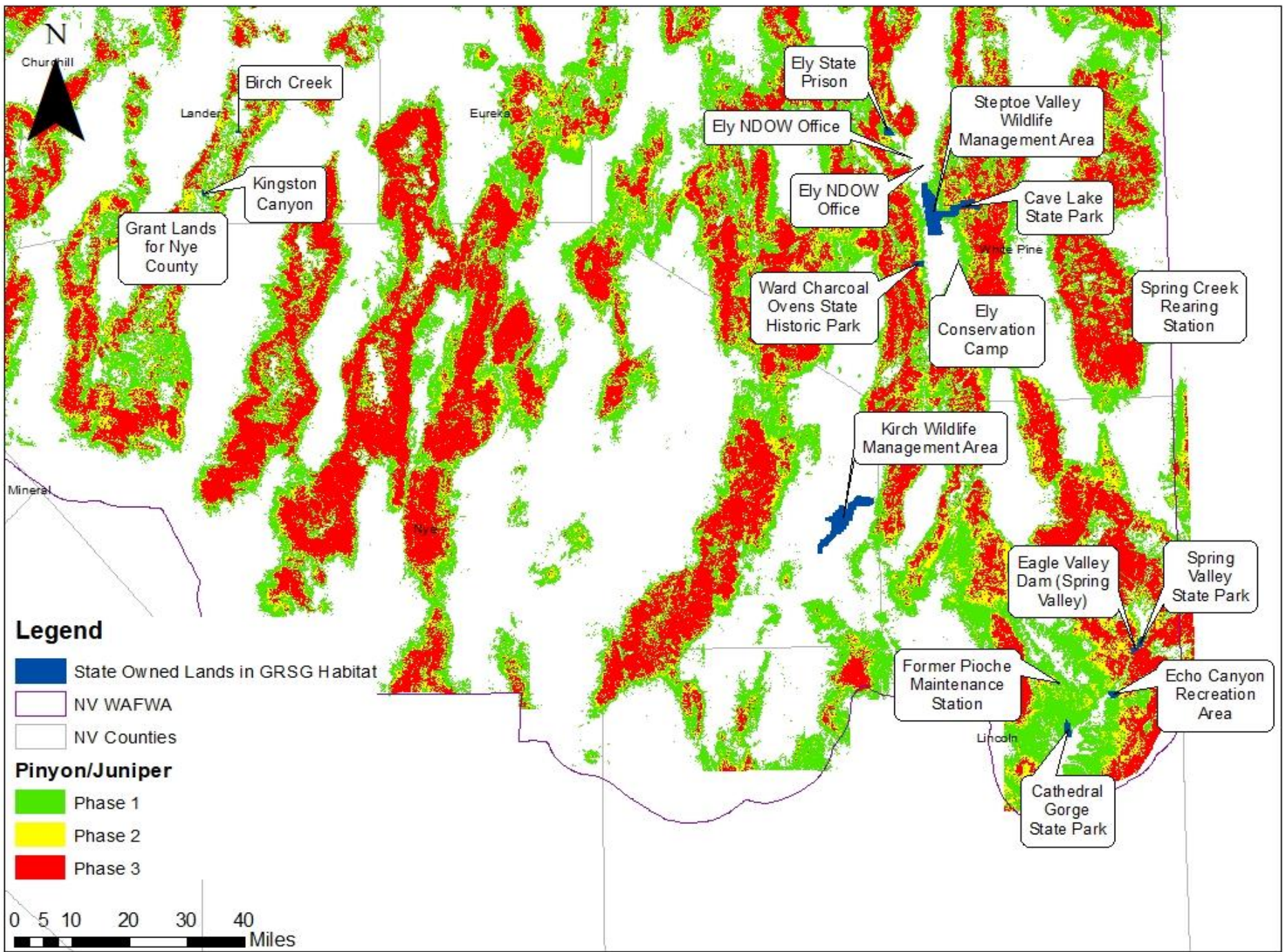
Legend

- State Owned Lands in GRS Habitat
- NV WAFWA
- NV Counties

GRSG Management Categories

- GHMA
- OHMA
- PHMA





N

Churchill

Birch Creek

Lander

Eureka

Ely State Prison

Ely NDOW Office

Steptoe Valley Wildlife Management Area

Grant Lands for Nye County

Kingston Canyon

Ely NDOW Office

Cave Lake State Park

White Pine

Ward Charcoal Ovens State Historic Park

Ely Conservation Camp

Spring Creek Rearing Station

Kirch Wildlife Management Area

Mineral

Eagle Valley Dam (Spring Valley)

Spring Valley State Park

Legend

State Owned Lands in GRSG Habitat

NV WAFWA

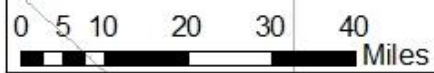
NV Counties

Pinyon/Juniper

Phase 1

Phase 2

Phase 3



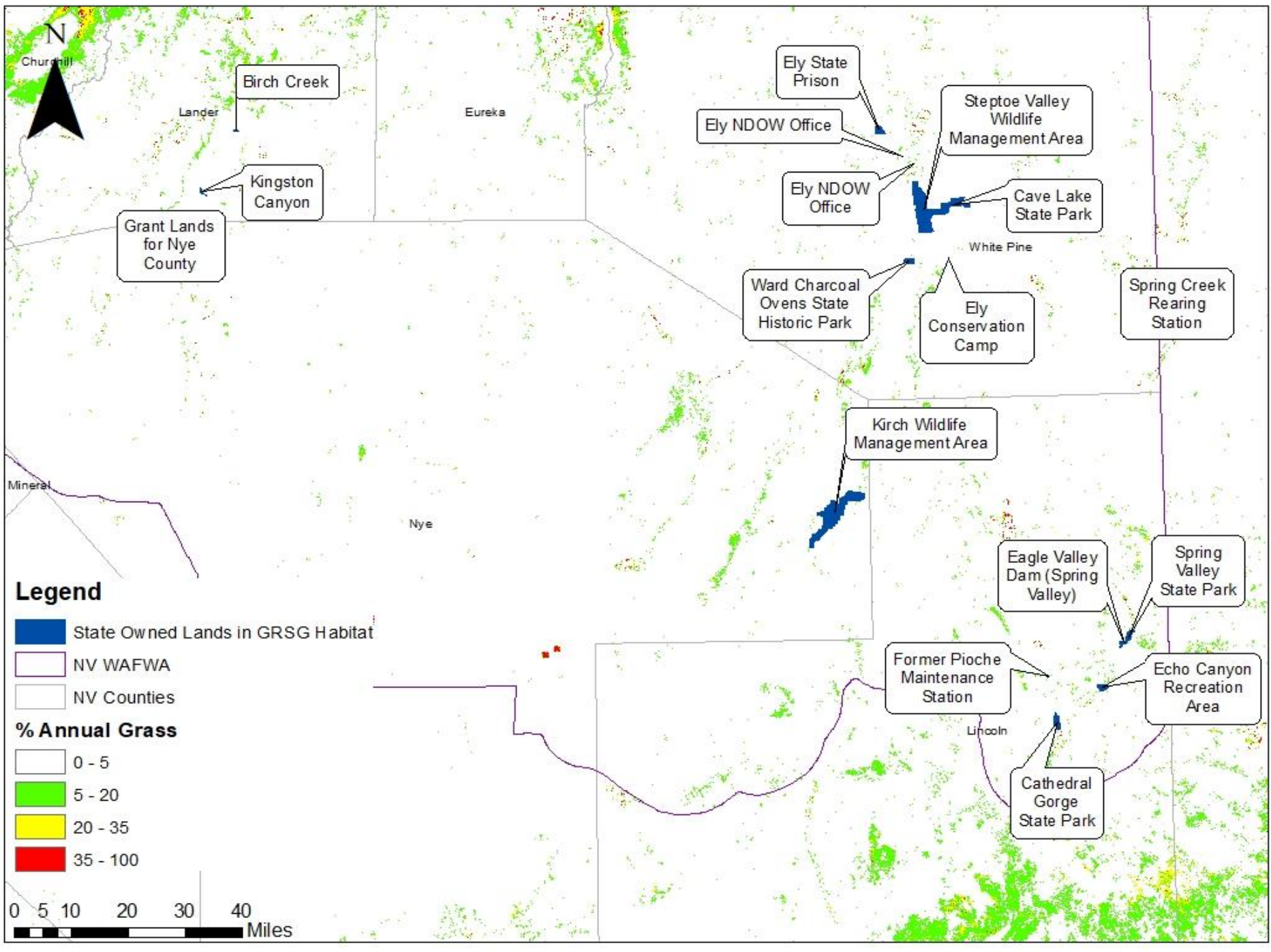
Miles

Lincoln

Former Pioche Maintenance Station

Cathedral Gorge State Park

Echo Canyon Recreation Area

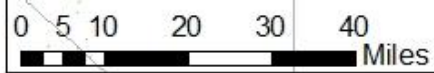


Legend

- State Owned Lands in GRS Habitat
- NV WAFWA
- NV Counties

% Annual Grass

- 0 - 5
- 5 - 20
- 20 - 35
- 35 - 100





State-Managed Lands in GRSG Habitat by County

	Management Category	Management Category Acres	Total Acres of Property	Management Category % of Total Acreage
ELKO				
CFS-12-0 - Nevada Youth Training Center (Elko)			473.83	
	GHMA	345.80		72.98%
	OHMA	126.97		26.80%
FOR-11-0 - Lamoille Highway Fire Station			0.79	
	GHMA	0.00		0.01%
FOR-17-0 - Elko District Office			2.48	
	GHMA	1.61		64.75%
	OHMA	0.87		35.25%
GRANT-3-0 - Elko County Grant Lands			41.18	
	GHMA	41.18		100.00%
NG-30-0 - Carlin Readiness Center			424.54	
	GHMA	416.98		98.22%
	OHMA	7.56		1.78%
NV-6-0 - Estate of John P. Flannigan			0.06	
	PHMA	0.06		100.00%
PARKS-54-0 - Wildhorse Reservoir Recreation Area			119.59	
	PHMA	119.11		99.60%
PARKS-60-0 - South Fork State Recreation Area			3,903.05	
	GHMA	871.47		22.33%
	OHMA	968.25		24.81%
WL-108-0 - Eastern Region Office/Shop Complex (Elko)			2.98	
	GHMA	2.98		100.00%
WL-115-0 - Izenhood Ranch (also spans Eureka County)			4,196.36	
	GHMA	972.70		23.18%
	OHMA	0.21		0.00%



State-Managed Lands in GRSB Habitat by County

	Management Category	Management Category Acres	Total Acres of Property	Management Category % of Total Acreage
ELKO (cont.)				
WL-118-0 - Snowstorm			7,239.14	
	PHMA	5,911.71		81.66%
	GHMA	863.25		11.92%
	OHMA	438.75		6.06%
WL-120-0 - HD Summit Parcels			1,035.30	
	PHMA	1,017.18		98.25%
WL-135-0 - Wildhorse Ranch Public Access Easement			2.50	
	PHMA	2.50		100.00%
WL-51-0 - Bruneau River Wildlife Management Area			3,501.80	
	PHMA	523.27		14.94%
	GHMA	1,772.64		50.62%
	OHMA	1,205.10		34.41%
WL-60-0 - Franklin Lake			3,188.10	
	PHMA	118.14		3.71%
	GHMA	427.40		13.41%
	OHMA	516.14		16.19%
WL-95-0 - Gallagher Hatchery (Ruby Fish Hatchery)			67.64	
	OHMA	5.88		8.69%



State-Managed Lands in GRSG Habitat by County

	Management Category	Management Category Acres	Total Acres of Property	Management Category % of Total Acreage
EUREKA				
FOR-31-0 - Pine Valley Fire Station			26.27	
	GHMA	26.27		100.00%
WL-115-0 - Izzenhood Ranch (also in Elko County)			4,196.36	
	OHMA	2,859.20		68.14%
WL-25-0 - Kingston Canyon			182.06	
	GHMA	114.44		62.86%
	OHMA	65.57		36.02%
WL-28-0 - Birch Creek			74.14	
	OHMA	74.14		100.00%
LINCOLN				
NV-23-0 - Former Pioche Maintenance Station			8.18	
	OHMA	5.14		62.83%
PARKS-2-0 - Cathedral Gorge State Park			1,756.85	
	OHMA	1,677.31		95.47%
PARKS-39-0 - Spring Valley State Park			916.81	
	PHMA	328.26		35.80%
	OHMA	398.49		43.46%
PARKS-44-0 - Echo Canyon Recreation Area			1,055.27	
	GHMA	375.59		35.59%
WL-37-0 - Eagle Valley Dam (Spring Valley)			104.68	
	OHMA	72.69		69.44%



State-Managed Lands in GRSB Habitat by County

	Management Category	Management Category Acres	Total Acres of Property	Management Category % of Total Acreage
NYE				
GRANT-5-0 - Grant Lands for Nye County			462.72	
	PHMA	39.90		8.62%
WL-17-0 - Kirch Wildlife Management Area			14,907.77	
	GHMA	4,507.08		30.23%
	OHMA	2,271.98		15.24%
WASHOE				
GRANT-6-2 - Vya Area Grant Lands			1,345.52	
	OHMA	129.93		9.66%
INFO-18-0 - Virginia Peak (Washoe County)			2.62	
	GHMA	2.62		100.00%
WL-49-0 - Hart Camp			162.40	
	PHMA	162.40		100.00%



State-Managed Lands in GRSG Habitat by County

	Management Category	Management Category Acres	Total Acres of Property	Management Category % of Total Acreage
WHITE PINE				
PARKS-42-0 - Cave Lake State Park			4,063.04	
	GHMA	1,095.08		26.95%
	OHMA	870.31		21.42%
PARKS-9-0 - Ward Charcoal Ovens State Historic Park			861.15	
	PHMA	314.52		36.52%
	GHMA	506.71		58.84%
PRIS-10-0 - Ely State Prison			1,040.47	
	PHMA	1,018.66		97.90%
WL-106-0 - Steptoe Valley Wildlife Management Area			12,806.39	
	PHMA	3,060.78		23.90%
	GHMA	8,055.70		62.90%
	OHMA	1,094.10		8.54%
WL-16-0 - Spring Creek Rearing Station			198.23	
	OHMA	119.42		60.24%
WL-76-0 - Ely NDOW Office			2.52	
	OHMA	2.52		100.00%